

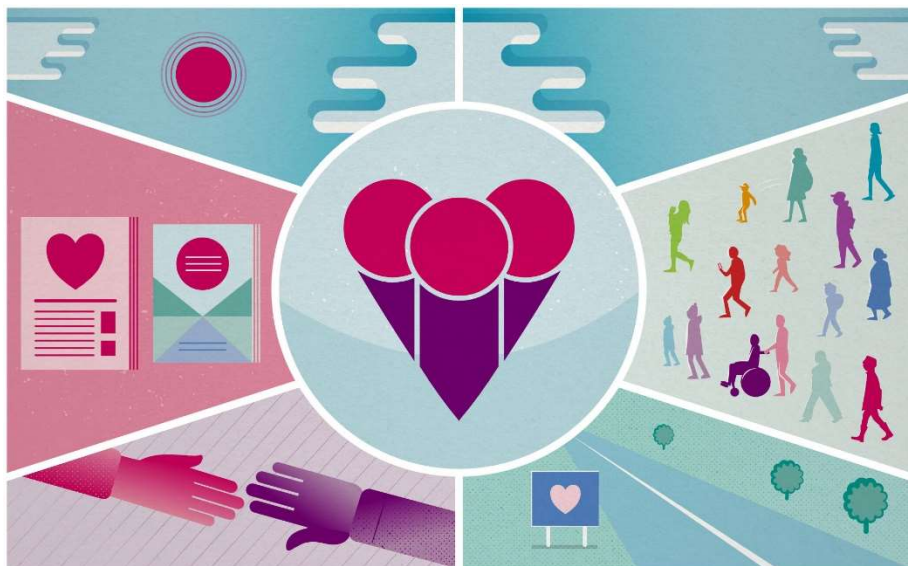
Health and Social Care

Exam board : Pearson

Specification no : 601/7197/2

Link to the Specification:

https://qualifications.pearson.com/en/qualifications/btec-nationals/health-and-social-care-2016.html#%2Ftab-Extended-Certificate_1



Content:

Topic	Assessment
Unit 1: Human Development and Life Span	External (examination)
Unit 5: Meeting individual' care and support needs.	Internal (coursework)
Unit 2: Working in Health and Social Care	External (examination)
Unit 14: Physiological disorders	Internal (coursework)

Course Delivery:

Lessons in the classroom will include a variety of formats, including group work, individual activities, role-plays, use of case studies and some formal note taking. Some study support is provided to help students with their assignments and other homework. Students should also expect to spend up to 2-3 hours per week outside lesson time on homework, background reading and research work.

Course Content:

Certificate (studied in year 12)

Human Development and Life Span

This unit covers the development of individuals through the life stage and an analysis of the factors which influence this, for example diet, and exercise, illness and life events. There is study of how effects of different factors can interlink and affect both short and long term development.

This is an external examination that involves both long and short questions.

Meeting individuals' care and support needs

This unit covers the approaches and methods used to support clients who have different health and social care needs including the challenges and barriers faced and how organisations overcome and remove these barriers. Study of some laws governing healthcare, the role of the care values and ethical theory is covered, to allow students the opportunity to investigate the moral dilemmas sometimes faced by health and social care workers.

This is an internal assessment that involves the completion of a written assignment that covers 4 subtopics in this area.

Course Content cont.

Working in Health and Social Care

This unit investigate specific job roles and responsibilities within the sector and the support that these roles provide. How healthcare teams work together and multi-agency working is also studied; this unit relates directly to the world of work and has a vocational context. This is an external examination that involves both long and short questions.

Physiological disorders and their care

This unit looks in-depth at a selection of disorders, for example diabetes, asthma and dementia and the effective management of these conditions through a combination of current healthcare practices; these include behavioural, holistic, medical and empowerment approaches. This is an internal assessment that involves the completion of a written assignment that covers 4 subtopics in this area.

Entry requirements:

If the subject is taken at GCSE it should be passed at 4 or above and at least one English/Humanities/Social Science subject should be passed with a 6. Students should have an interest in health or the caring professions and have good organisational skills due to the emphasis on coursework assessment.

Skills & personal qualities required / developed by course:

Students have commented on how the language used/ learnt during the course really helped them when they went to interviews for nursing and care of children related courses. Students develop confidence through focussing on their own communication skills and how these affect others. Students also develop valuable research, analytical and presentation skills and apply their learning about communication to the challenges of the workplace.

Recommended reading / websites:

Recommended Books

- McGee P – *Principles of Caring* (Nelson Thornes, 2005)
- Spector A – *Making a Difference* (Hawker, 2006)
- Morris C – Knowledge Set for Safeguarding Vulnerable People (Heinemann, 2008)
- Jasper M – *Beginning Reflective Practice* (Nelson Thornes, 2003)
- Clark B – *A Mother Like Alex* (HarperTrue 2008)
- Kay A- *This Is Going To Hurt: Secret Diaries of a Junior Doctor* (Picador, 2017)
- Worth J- *Call the Midwife* (Orion, 2007)

Recommended Websites

www.communitycare.co.uk Community Care
www.skillsforhealth.org.uk Sector Skills Council for the UK Health Sector
www.bbc.co.uk/news/health BBC Health News
www.bbc.co.uk/news/education BBC Family and Education News
<https://www.newscientist.com/> - New Scientist

TED Talks

- Social workers are super hero's- Anna Scheyette
- All it takes is 10 Mindful Minutes- Andy Puddicombes
- 5 Ways to Listen Better- Julian Treasure

For further information: Contact Ms Mlewa, Head of Health and Social Care

Telephone: 0117 353 2073

Email: 6thform@smrt.bristol.sch.uk

www.smrt.bristol.sch.uk

