

# REDCLIFFE SIXTH FORM Y13 Parents/Carers' Information



# FORMAT FOR THE PRESENTATION

- Exam results and ethos
- 6th Form ALIVE standards
- Pastoral support and 6<sup>th</sup> form processes
- Study Skills support
- Getting involved as parents/carers
- Preparing to move on

# EXAM RESULTS

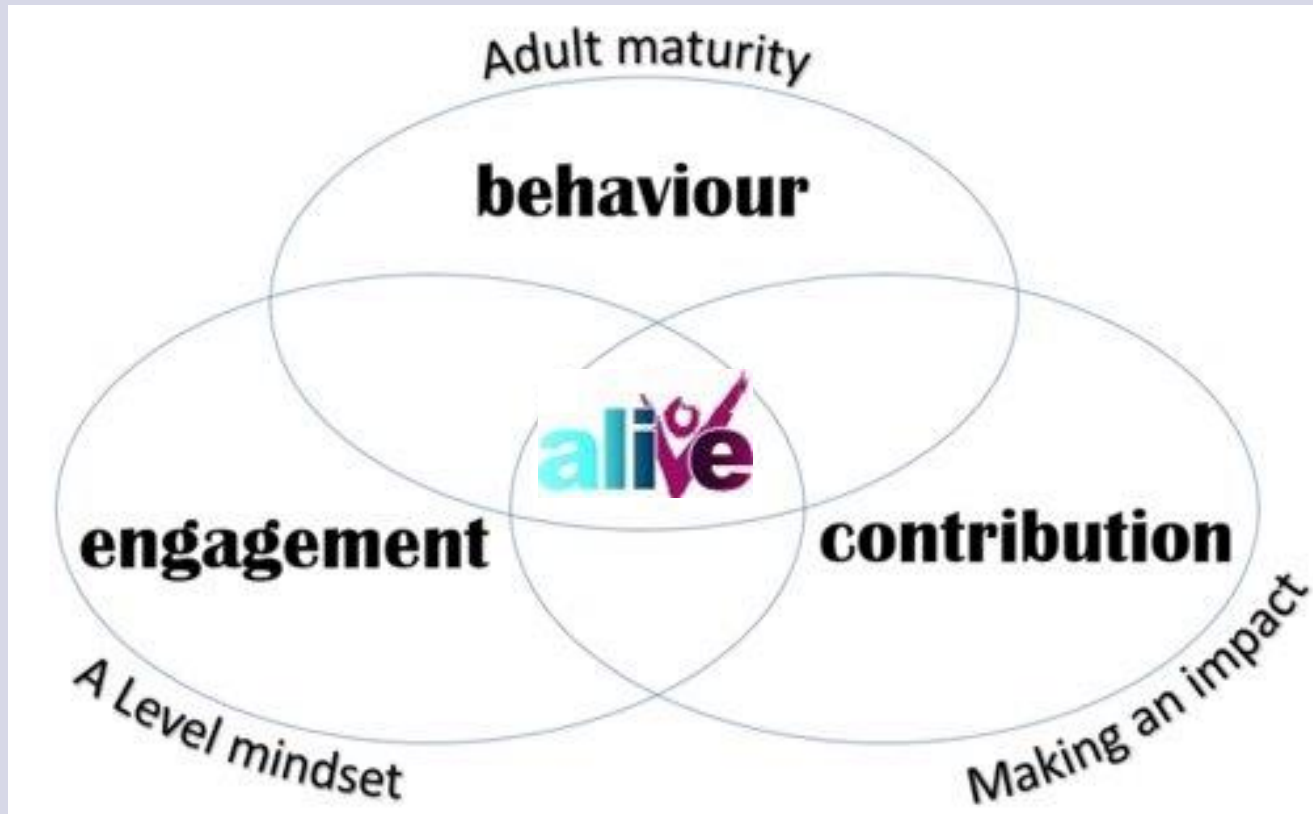
<b>KS5 Results</b>	<b>2019</b>	<b>2023</b>	<b>2024</b>	<b>2025</b>
KS5 grades at A+	<b>23.6%</b>	<b>24.4%</b>	<b>26.2%</b>	<b>26.9%</b>
KS5 grades at B+	<b>49.5%</b>	<b>53.1%</b>	<b>57.8%</b>	<b>57.1%</b>
KS5 Grades at C+	<b>75.2%</b>	<b>78.1%</b>	<b>79.3%</b>	<b>82.4%</b>
KS5 Pass rate	<b>98.1%</b>	<b>98.3%</b>	<b>97.5%</b>	<b>97.8%</b>
KS5 Avg Grade per entry	<b>C+</b>	<b>B-</b>	<b>B-</b>	<b>B-</b>

**9 students** confirmed places at Oxford or Cambridge

**12 students** accepted to medical schools

80% of UCAS applicants accepted to firm choice courses

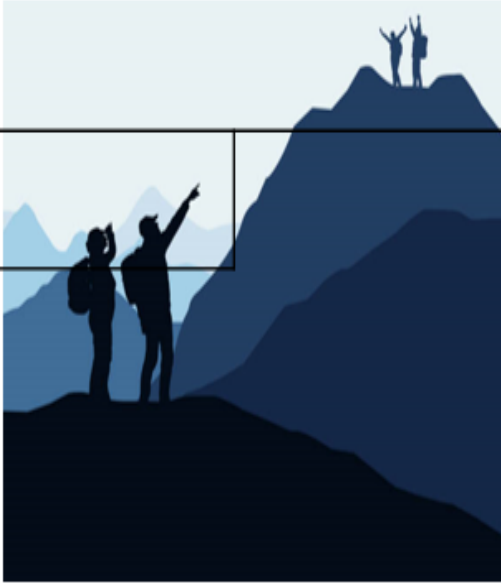
# 6<sup>TH</sup> FORM STANDARDS



St Mary Redcliffe and Temple School - Engagement, Behaviour and Contribution Levels  
([smrt.bristol.sch.uk](http://smrt.bristol.sch.uk))



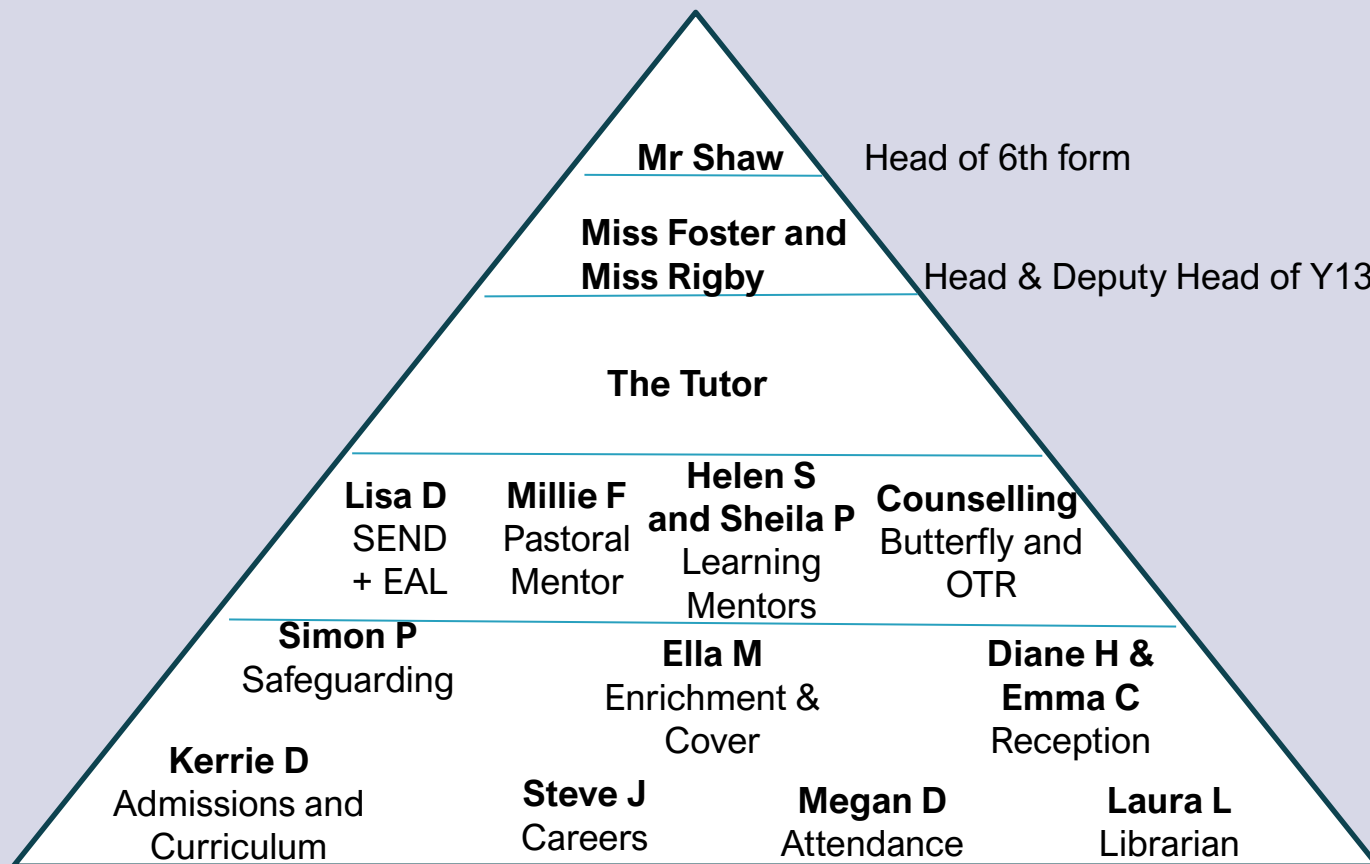
# PLOTTING THE COURSE

A*	Star quality!	
A	A Level <u>mindset</u> and Adult maturity	
B	Beginning the journey, Basic skills and expectations met	
C	Causing concern in behaviours or engagement	
D	Deepening concern	
E	Extreme concern!	

# THE YEAR 13 ACADEMIC JOURNEY

- Teachers are marking and assessing all the time, but we will also have some more formal periods of assessment
- **Monday 17 November - Y13 Grade-sheet** emailed to students and parents/carers with updated Predicted Grades and Engagement Levels.
- **Monday 12 January- Friday 23 January- Y13 Mocks.** Please note that students will not be off-timetable during these two weeks.
- **Wednesday 28 January- Y13 Parental Briefing** at 5pm to provide information on preparing for summer exams, student finance and progression decisions.
- **Monday 9 February- Y13 grade-sheet** emailed to students and parents/carers with mock grades, and updated engagement and predicted grades.
- **Tuesday 10 February- Y13 Online Parent/Carers subject consultation evening** (you will receive the details for this in January)
- **Wednesday 6 May- A Level and AS exams start**
- **Friday 15 May – Y13 Last day** and start of study leave
- **Wednesday 24 June – Y13 Leavers Ball**

# LEVELS OF PASTORAL SUPPORT



# PASTORAL SUPPORT IN MORE DETAIL

**Registration:** 8:30 on  
Weds/Thurs with tutor

**VIP and tutorials:** One  
lesson a week, 1:1 check  
ins and progression  
support with tutor

**Assembly:** 8:30 every  
other Tuesday –  
progression, A Level  
mindset, Enrichment,  
RAG, external  
opportunities

**Progression:** Mr Jones  
and Steve

**Interventions:** 8:30 sign  
ins, library catch up,  
support plans

**Any additional support:**  
Students can speak to  
tutor or Miss Foster / Ms  
Rigby to  
access wellbeing or  
learning support



# INDEPENDENT STUDYING

## 'Hour for an hour'

- Quality of independent study makes a huge difference to success in Yr13
- Students should expect to do spend **one hour working independently for every hour in a lesson**
- This works out at roughly 15 hours for students studying 3 subjects
- This should be a combination of work set by the teacher and routine study tasks
- There's no such thing as “no homework”
- Guidance on how to study independently in VIP and on our study skills website...

# THE STUDY SKILLS WEBSITE



- Advice from teachers and students
- Subject specific guidance
- Motivation and attitude
- How to plan and keep organised
- How to revise

# SUPPLEMENTARY OPTIONS

To meet the requirements for full-time study all students need to ensure they have confirmed their supplementary option with us...

**4th subject** – does not apply to many students

**EPQ** - Easter final deadline

**Maths Studies** (AS equivalent) and GCSE Maths resit

**Super-curricular** - wider reading / online learning

**D of E/Work Experience/Volunteering** - an hour a week / - 30 hours total

**Library lessons** - for students who really struggle to self-organise and meet deadlines

# LEADERSHIP AND ENRICHMENT

## Leadership

- Senior Students
- Subject mentors
- Tutor mentors
- Main school volunteering – Yr7 reading, 1:1 mentoring

## Enrichment

- Leading clubs and societies
- Getting involved
- Med soc, football, debate, Warhammer, board games, band, LGBT, BAME, Politics, Psychology, Redcliffe Report, MUN, Law, Art & crafts, Dance, Sign Language, Film club

# ATTENDANCE ROUTINES



We know attendance matters



Parents/carers call the absence line each day the student is absent or email [6thform@smrt.bristol.sch.uk](mailto:6thform@smrt.bristol.sch.uk)



For a doctor's appointment, students should complete an 'absence in advance' form, available from reception / email staff and ask what will be missed.



All attendance and punctuality issues are taken seriously and chased up.

# PARENTAL SUPPORT

- Support us with attendance monitoring
- Read the weekly **newsletter** and point things out to them
- Contact the tutor if you have concerns
- Watch out for signs of **stress** – let us know
- Don't let **paid work** get out of balance (max 8 hours /week)
- Ask students what they are doing and get them to **talk** about it!
- Offer to **test** them on things – it does help
- Find out how homework is recorded on **Bromcom**
- Consider student's work-life balance!
- Direct them to us for any concerns about progression plans, welfare or academic work.

# FINANCIAL SUPPORT

**Free school meals** - in receipt of universal credit/child tax credit below around £16190

**Bursary scheme** – means tested for those not on free school meals but supports households with a wider range of incomes. Students need to reapply each year.

**Enabling fund** - for non-bursary students supports with trips and learning / enrichment activities (details on the school website)

Students needing further information should speak to **Millie Feldman** (based in the office in front of reception) to request assistance.

# THE YEAR 13 PROGRESSION JOURNEY

- Use of Tutorial periods
- Unifrog website – all research including apprenticeship, GAP year, CV writing etc
- SMRT Progression website – all school specific information
- UCAS website – University applications
- Careers advisor



# UCAS

- UCAS predicted grades
- Personal Statement
- UCAS reference
- Contextual Offers – Bristol, Exeter, Contextual Offer Finder

## Deadlines

- 2nd October 2025 – Music conservatoire
- 15th October 2025 (school deadline 3rd October) - early entry deadline (Oxford, Cambridge, Medicine, Dentistry, Vet Science)
- January 14th 2026 – UCAS final deadline for all other courses (**Most students will submit before December**)
- GAP year – we will support

# ADDITIONAL EXAMS

Route	Exam	Deadlines	Key Info
Medicine	UCAT	CLOSED	Sent directly to university & considered different by each.
Cambridge Oxford	College Admissions	Various – check with colleges	Externally sat at Pearson VUE test centres. Most will be sat in Oct – info on subject pages
Law	LNAT	From 1st Aug	Must be sat by deadline of submissions.
Maths	MAT – Oxford	CLOSED	Sat at Pearson VUE test centre by 31st Oct.
	STEP – Cambridge	2026	Contact <a href="mailto:exams@smrt.bristol.sch.uk">exams@smrt.bristol.sch.uk</a>
	TMUA – various universities	CLOSED or 19th December	Must be sat by submission of UCAS application

# APPRENTICESHIPS

- Lots of opportunities on the Progression Blog
  - Lloyds Apprenticeship Application Support – 10th Oct
  - BP Apprenticeships
  - Finance Apprenticeships
  - Burges-Salmon Legal Apprenticeship
- Apprenticeship & University Fair @ Ashton Gate on Wednesday 8th October
- In-school talks w/c 13th October at lunchtime.
- Unifrog – Apprenticeship Tool
- Amazing Apprenticeships Shortlist

# COMING UP & OPPORTUNITIES

- February parental briefing includes Uni Finance talk
- Same talk for students during an extended tutor session, open to apply in April
- Bristol Scholars Programme
- 1:1 meetings with career advisor
- Progression blog linked on newsletter – opportunities
- Work Experience- 'Not Impossible'

# **ANY QUESTIONS?**

THANK YOU VERY MUCH FOR COMING