

REDCLIFFE SIXTH FORM Y12 Parents/Carers' Information



FORMAT FOR THE PRESENTATION

- Exam results and ethos
- A Levels and Exams
- A Level Mindset and academic plan for the year
- Pastoral support and 6th form processes
- Study Skills support
- Enrichment activities
- Preparing to move on
- Getting involved as parents/carers

ETHOS



- Every young person fully **Alive**.
- Students as young adults but with support for those who need more structure.
- Strong sense of community
- Students known and cared for as individuals.
- Appropriate dress and behaviour for a school environment.
- Students are made aware of what they need to do to make progress and are responsible for taking those steps.
- Students helped to develop the ability to fully utilise study periods and balance workload and extra-curricular activities.

EXAM RESULTS

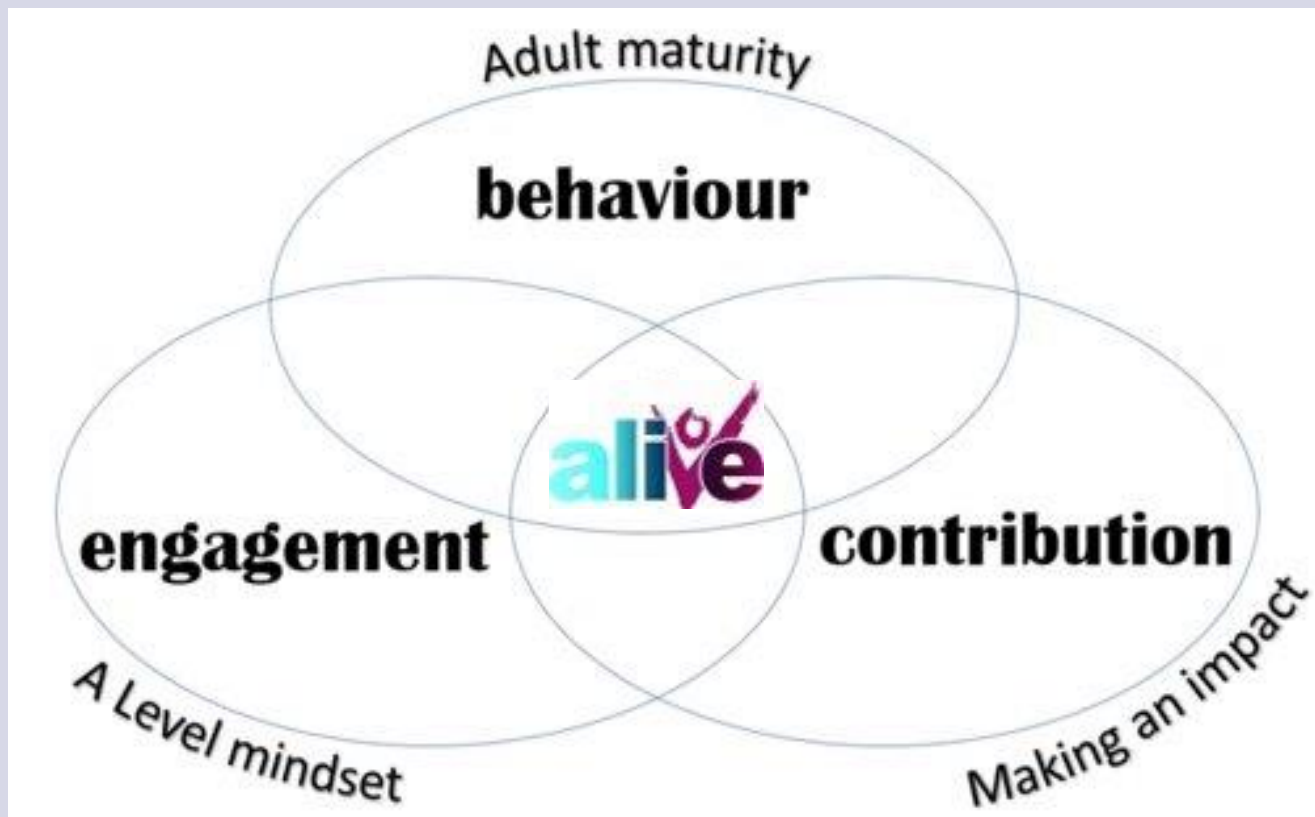
KS5 Results	2019	2023	2024	2025
KS5 grades at A+	23.6%	24.4%	26.2%	26.9%
KS5 grades at B+	49.5%	53.1%	57.8%	57.1%
KS5 Grades at C+	75.2%	78.1%	79.3%	82.4%
KS5 Pass rate	98.1%	98.3%	97.5%	97.8%
KS5 Avg Grade per entry	C+	B-	B-	B-

9 students confirmed places at Oxford or Cambridge

12 students accepted to medical schools

80% of UCAS applicants accepted to firm choice courses

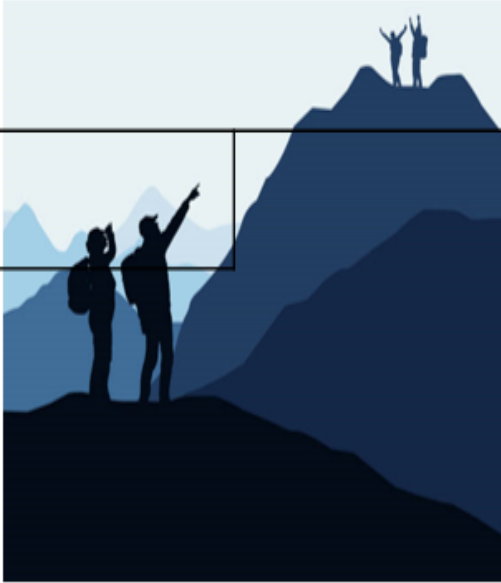
6TH FORM STANDARDS



St Mary Redcliffe and Temple School - Engagement, Behaviour and Contribution Levels
(smrt.bristol.sch.uk)



PLOTTING THE COURSE

A*	Star quality!	
A	A Level <u>mindset</u> and Adult maturity	
B	Beginning the journey, Basic skills and expectations met	
C	Causing concern in behaviours or engagement	
D	Deepening concern	
E	Extreme concern!	

HOW ARE STUDENTS ASSESSED?



- Examinations vary widely between subjects.
- For AS Level 3 hours of exams per year split across two papers is common for written subjects.
- For A Levels 6 hours per subject will be normal in year 13.
- English, creative, practical and vocational subjects have a coursework component spread through the course.

A LEVELS



- A Levels are 'linear' - examined at the end
- Nearly all students study **3 or 4 A Levels subjects**.
- Most subjects have 9 periods over a fortnight in Y12, 10 per fortnight in Y13, often taught by two teachers.
- Almost all of those studying **4 A Levels** will drop one of these eventually (when they are ready!).
- The option exists of sitting the **AS exam** in their fourth subject for some but not all subjects (see our website).

AS LEVELS

AS LEVEL

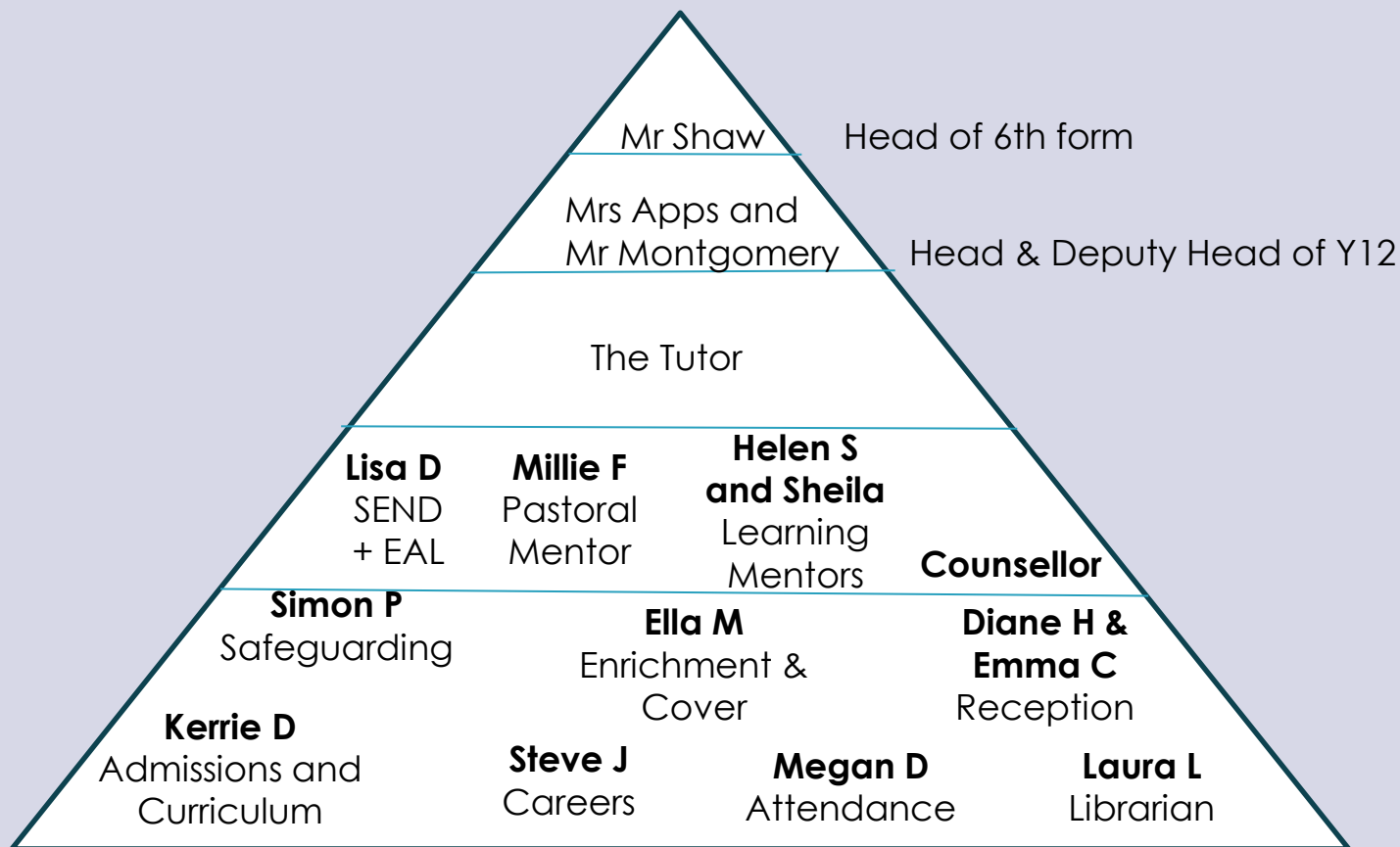
- There is no expectation for any student to sit an external exam in the summer of 2026
- Students might decide to sit an AS exam if they are still doing 4 subjects by February (when the entries go in), and want to gain a qualification in the subject that they plan to drop.
- AS grades should be declared on a UCAS form.
- Internal mocks in April/May 2026 for all which help inform predicted grades for university applications.

INTERNAL ASSESSMENT AND REPORTING



- Teachers are marking and assessing all the time, but we will also have some more formal periods of assessment
- **Wednesday 3 December**- Online Parent/Carers subject consultation evening.
- **Tuesday 16 December**- Y12 grade-sheet emailed to students and parents/carers with Engagement Levels and predicted grades.
- **Wednesday 18 March**- Progression Morning for students and Parent/Carer Higher Education Information briefing in the Evening.
- **Monday 20 April- Friday 1 May**- Y12 Mock Exams.
- **Monday 12 May** - AS exams start for those students that decide to sit them.
- **Monday 1 June**- Year 12 grade-sheet emailed to students and parents/carers with the results of the mocks and updated effort and predicted grades.
- **Monday 6 July- Friday 10 July**- Y12 Work Experience Week and Geography Coursework Wednesday
- **Wednesday 22 July**- Last day of Y12 before the holidays.

PASTORAL SUPPORT



TIMINGS OF DAY

- There are 5 one hour sessions per day (except Fridays)
- Friday timetable: each lesson shorter by 10 mins
- Also on the school website in the 6th form tab

Monday-Thursday	
9am – 10am	Period 1
10am – 10.20am	Break
10.20 – 11.20	Period 2
11.20 – 12.25	Period 3
12.25 – 1.10	Lunch
1.10 – 2.10	Period 4
2.10 – 3.15	Period 5

Friday	
9am – 9.50am	Period 1
9.50 – 10.45	Period 2
10.45 – 11.05	Break
11.05 – 11.55	Period 3
11.55 – 12.50	Period 4
12.50 – 1.35	Lunch
1.35 – 2.25	Period 5



ATTENDANCE ROUTINES



- If students are ill, parents/carers should call the attendance line, ideally before 8.30am

0117 3773465

- If it is for more than one day parent/carers should call each day
- For unexplained absences Megan Fox (Attendance Officer), HOY or DHOY will email or call parents/carers.
- For any medical appointments students should complete an 'absence in advance' form, available from reception / email staff and ask what will be missed.

PASTORAL SUPPORT



- **Registration** at 8.30am once a week on a Monday or Tuesday with tutor - key messages for the week and also attendance checking
- **VIP** once a week with tutor – study skills, progression planning and wider personal/social issues
- **Assembly at 8:30am once a fortnight on** a Wednesday or Thursday. Topics this term include what an A Level Mindset is, Enrichment, the importance of asking for help, Black History Month, and Raising and Giving.
- **External visitors** – Yuno previously Brook (sexual health and well-being, including consent), Bristol Drugs Project (impact of unhealthy behaviours), Integrate (Representation and diversity), Avon and Somerset Police (driving safety)
- Further info through weekly Newsletter.

ACCESS ARRANGEMENTS / SEN



- As part of the application procedure students were asked whether they had been given extra time in exams in the past.
- This information has now been collated and our 6th Form SEN dept will meet with students to discuss their current needs and identify appropriate assistance.
- If students feel they may be eligible for support that they aren't receiving they should talk to tutors or HOY in the first instance.

INDEPENDENT STUDYING



- Students should expect to do **spend one hour working independently for every hour in a lesson**, which works out at roughly 15 hours for students studying 3 subjects.
- This is not the case for students on 4 subjects and students will build up to this throughout the year
- This should be a combination of work set by the teacher and routine study tasks such as on the next side.
- There is always something to do!
There's no such thing as "no homework"

THE STUDY SKILLS WEBSITE



- Our study skills site is accessible via our school website, if you go to 6th form and then study skills.
- You will find:
 - Information on the differences between GCSEs and A Levels
 - What specifications students study at Redcliffe
 - When you receive feedback and what this looks like
 - When student should drop a 4th subject
 - What to take into consideration for those contemplating sitting an AS
- You will also find advice and guidance on how students can develop the skillset needed for A Level including:
 - How to plan and keep organised
 - Advice and guidance on how students can develop the motivations and attitudes needed to enable them to reach their potential.

ENRICHMENT ACTIVITIES



- Enrichment fair and handbook just released
- Example of activities on offer:
 - *Politics, Feminist, BAME, LGBTQ+*
 - *Warhammer*
 - *Medical Dentistry Vet, Law, Psychology*
 - *Christian Union, Islam*
 - *Board games club, Chess*
 - *Debating, Model United Nations*
 - *BSL*
 - *Engineering*
 - *Art*
 - *Volunteering*
 - *Music including choirs, bands and tuition*
 - *Various Sports*

PREPARING TO MOVE ON



- From the outset we will encourage students to make decisions that keep their **options** open
- We will constantly remind them of the need to provide **evidence** for UCAS, apprenticeship and job applications
- We will advertise a very wide selection of additional talks, courses and activities through the newsletter, registration and progression blog
- Later in year 12 a range of activities and advice preparing for next steps will be offered in VIP
- Careers advisor

GETTING INVOLVED AS PARENTS/CARERS



How can I help?

- Give some space – let them grow up a bit
- Ask them questions about their work – get them to talk
- Point them towards their teachers and tutor if they seem unsure of anything or insecure – check in later and ask what they found out
- Don't let attendance slip – check timetables on Bromcom (MCAS)
- Consider their work environment – can they focus without distraction
- Read the weekly newsletter and point things out to them

FINANCIAL SUPPORT



- **Free school meals** - household income/benefits below currently £16190
- **Bursary scheme** – means tested but supports households with a wider range of incomes:
- **Enabling fund** - for non-bursary students. Supports with trips and learning / enrichment activities (details on the school website)
- Students needing further information should speak to **Millie Feldman** (based in the office in front of reception)
- to request assistance.

ANY QUESTIONS?

THANK YOU VERY MUCH FOR COMING